

OFFICIAL 2026-2027 GUIDE

GATLINBURG

ATTRACTIONS ASSOCIATION



OUR ATTRACTIONS



1

GATLIN'S ESCAPE GAMES
Five Fully Immersive Experiences!



2

SMOKY MOUNTAIN OUTDOORS
River Rafting on the Pigeon River



3

RIPLEY'S AQUARIUM OF THE SMOKIES
Where the Mountains Meet the Sea!



4

GATLIN'S MINI GOLF
Award-Winning Mini Golf Fun



5

RIPLEY'S SUPER FUN ZONE!
Radical Retro Thrills!



6

ARCADIA
Play Big. Win Big.



7

MYSTERIOUS MANSION
Gatlinburg's Oldest and Most Terrifying Haunted House



8

RIPLEY'S BELIEVE IT OR NOT!
The Most Bizarre and Curious Place to Be!

Find Your Next Adventure!

9

GATLINBURG CRAFTSMEN'S FAIR
Best Shopping in Gatlinburg!



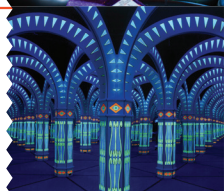
10

GATLIN'S FUN CENTER
All-in-One Family Fun Center



11

AMAZING MIRROR MAZE
Gatlinburg's Original Mirror Maze



12

RIPLEY'S ARCADE
Hi-Tech Family Entertainment



13

GATLINBURG SKYPARK
The Best Views in Gatlinburg



14

RIPLEY'S DAVY CROCKETT MINI-GOLF
Fun on the Wild Frontier!



15

RIPLEY'S MOTION BLASTER
The Future of Fun



16

RIPLEY'S HAUNTED ADVENTURE
Are You Ready to Face a Mountain of Fear?



OUR ATTRACTIONS



17

HILLBILLY GOLF

America's Most Unique
Mini-Golf Course



18

GATLINBURG SPACE NEEDLE

Epic Views from 407 Feet Up



19

ANAKEESTA

A Mountain of Fun to Explore!



20

RIPLEY'S MOUNTAIN COASTER

The Wildest Ride in Gatlinburg!



21

FANNIE FARKLE'S

Come for the Food, Stay for the Fun!



22

RIPLEY'S PENGUIN PLAYHOUSE

African Blackfooted Penguin Habitat



23

NOC GATLINBURG

Outdoor Gear & Gifts for Smoky
Mountain Adventures



24

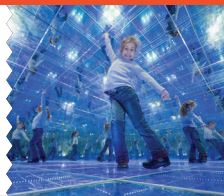
CIRCUS GOLF

18-Hole Indoor Adventure!

Find Your Next Adventure!

25

RIPLEY'S MIRROR MAZE
Never Ending Adventure!



26

**HOLLYWOOD STAR
CARS MUSEUM**
Where the Cars Are the Stars!



27

OBER MOUNTAIN
Gatlinburg's True
Mountain Adventure!





GATLINBURG, TN

The Mountains Are Calling

We didn't set out to make history, at least not at first.

In the beginning, our growth was simply about survival. But with every challenge that tested our grit, and every triumph that strengthened our spirit, something remarkable happened. Over time, this little mountain town became a place everyone seems to know, even if they've never been here.

Since 1945, millions of travelers and generations of families have wound their way up the Parkway, drawn to the heart of Gatlinburg. For more than seventy-five years, our tables have overflowed with warmth and good food, from golden stacks of pancakes to slow-smoked Tennessee barbecue shared among friends. Our hotels, motels, lodges, and cabins have held stories of laughter, love, and lasting memories, reunions and honeymoons, first dates and family traditions, getaways that turned into homecomings. Our attractions continue to spark joy and wonder in visitors of every age and background.

Yes, Gatlinburg's look has changed over the decades, but the heart of it, our heritage, our resilience, and our deep love for these mountains, remains the same. Those who came before us built more than a town; they built a spirit. One that has been handed down through generations and now lives in every trail, every sunrise, and every friendly smile you find here.

The Gatlinburg of today may not look like the one our forebears knew, but its soul is unchanged. What began as a humble settlement has blossomed into a mountain paradise, a place that welcomes nearly 12 million visitors each year, yet still feels like coming home.

Because no matter how much time passes or how far you roam, there's something about these mountains that always calls you back.



SINCE OUR INCORPORATION IN 1945, WE'VE BEEN HARD AT WORK TURNING A LITTLE-KNOWN OUTPOST OF THE GREAT SMOKIES INTO AMERICA'S PREEMINENT MOUNTAIN HOME.

Get More from Gatlinburg!

Download the Official Gatlinburg App

Planning a Visit to Gatlinburg, Tennessee or looking for more information on Gatlinburg? Use this ALL-NEW handy app to get around and find all the cool things to do while you're in town.

Our free, newly updated app gives you mountains of information. Find out about special events and festivals, attractions, outdoor adventure, unique restaurants, places to stay, maps and much more!

You can even search for things to do, places to eat and drink, and current happenings and events based on your location. Use the app to access exclusive interactive content like contests, challenges, and scavenger hunts. Go to **GATLINBURG.COM/APP** or search in the App Store to download the free app.





Arts & Crafts in Gatlinburg

Explore the Great Smoky Arts & Crafts Community, a celebrated destination recognized as a historic pathway on the Tennessee Arts & Crafts Trail by the Governor of Tennessee. Home to the largest group of independent artisans in North America, this community has been showcasing the creativity and craftsmanship of the Smoky Mountains since 1937.

Stroll along the scenic eight-mile loop to discover a delightful collection of galleries, studios, and shops, each offering one-of-a-kind handmade treasures. Along the way, enjoy a bite at charming restaurants, cozy cafés, and a traditional tearoom.

Just a few minutes away, the renowned Arrowmont School of Arts and Crafts continues Gatlinburg's proud artistic legacy, offering world-class workshops, exhibitions, and programs that inspire makers from around the world.

Conveniently located just three miles east of downtown Gatlinburg along East Parkway (Highway 321 North), the Arts & Crafts Community — together with Arrowmont — offers a vibrant and authentic look into Appalachian artistry and tradition. For more information, visit [GATLINBURGCRAFTS.COM](https://www.gatlinburgcrafts.com)



OUR CITY PARKS

Where Fresh Air Abounds

The City of Gatlinburg has three beautiful City Parks and a Community Center available for use by residents and visitors. Each park has a children's playground, a covered picnic pavilion, and restroom facilities.

Visitors are encouraged to take advantage of the Gatlinburg Community Center, a 52,000-square-foot facility open to everyone, offering pickleball and basketball courts, a bowling center, an indoor swimming pool, an all-purpose fitness center, and a variety of community programs and fitness classes.

The City of Gatlinburg operates a trout farm in order to stock city streams with trout year-round. Trout facility staff stock sections of the West Prong of the Little Pigeon River, Dudley Creek, Roaring Fork and LeConte Creek every Thursday, which is the only day of the week when fishing is prohibited inside city limits. Mynatt Park and Herbert Holt Park have river sections dedicated as children's fishing only. Children 12 and under can fish in the dedicated sections and are not required to have a Tennessee fishing license.



Mills Park features an 18-hole disc golf course, a dog park, a 400-meter track, a football field, a softball field, a basketball/soccer court, a walking trail, outdoor exercise equipment, a playground area, picnic tables, a covered pavilion, sinks, grills, and restrooms.



Mynatt Park is newly renovated, the park features ADA-compliant walking trails, a new baseball/softball field, renovated basketball and tennis courts, pickleball courts, a green space, a children-only fishing stream and plenty of picnic tables, as well as the 2016 Wildfires Memorial.



Herbert Holt Park features include a children-only fishing stream, the William C. Stevens Handicap Accessible Fishing Pier, the Gatlinburg Trout Facility, a covered pavilion which seats 128 individuals, picnic tables, sinks, grills, a playground, and restrooms.



*Game Night,
Leveled Up!*

Gatlin's ESCAPE GAMES

Your Unforgettable Adventure Awaits

- Work together in a 60-minute race against the clock to escape one of our 5 unique games
- Perfect for families, friends, first-timers, and enthusiasts!
- Rated #1 Escape Room in Gatlinburg
- Are you ready to escape? Prepare for an unparalleled experience everyone in your group will be talking about for years!



1

GATLINESCAPEGAMES.COM
(865) 412-4089
716 PARKWAY
AT REAGAN TERRACE MALL



SMO

SMOKY MOUNTAIN OUTDOORS

RAFTING

Most Trusted Outfitter on America's #1 River

- ♦ River Rafting on the Pigeon River
- ♦ Scenic 45-Minute Drive from Gatlinburg
- ♦ Upper River Class III & IV Whitewater Trip - age 8+
- ♦ Lower River Class II Scenic River Trip - age 3+
- ♦ No Experience Necessary - a Professional Guide in Every Boat
- ♦ Family Owned and Operated Since 1993



SMOKYMOUNTAINRAFTING.COM

(865) 430-3838

103 SILVERBELL LANE, DIRECTIONS TO RIVERSIDE OUTPOST ON OUR WEBSITE

2



RIPLEY'S AQUARIUM OF THE SMOKIES®

Where the Mountains Meet the Sea!

- ◆ Marvel at 12-foot sharks, a giant sea turtle, exotic sea creatures and playful penguins!
- ◆ Touch Jellyfish and Stingrays, or feed Stingrays and Turtles!
- ◆ Enjoy hourly dive/feeding shows and a Penguin Parade at 1:15pm daily!
- ◆ Experience a Glass Bottom Boat Adventure over Shark Lagoon!
- ◆ See Mermaids swimming June and July!



3

RIPLEYSAQUARIUMOFTHESMOKIES.COM
(865) 430-8808
ON THE PARKWAY
AT TRAFFIC LIGHT #5



*Timeless
Family Fun!*

Gatlin's MINI GOLF

Award-Winning Mini Golf Fun

- ♦ 45 holes of indoor and outdoor play
- ♦ Two 18-hole hillside courses with views
- ♦ Learn Gatlinburg history at every hole
- ♦ Black Light Golf: an underwater-themed adventure
- ♦ Open year-round, rain or shine
- ♦ Bundle with Escape Games, Laser Tag & more



GATLINSMINIGOLF.COM
(865) 407-2102
716 PARKWAY
AT REAGAN TERRACE MALL

4



RIPLEY'S® SUPER FUN ZONE!

Radical Retro Thrills!

- Throwback Fun for the Whole Family!
- Step into endless excitement with '80s-themed Laser Tag, Indoor Mini-Golf, and retro gift shop!
- Go head-to-head with family, friends, and foes to get the high score!
- Snap up unique gifts and souvenirs featuring favorite pop culture icons, musical acts, video games, posters, and more!



5

RIPLEYSGATLINBURG.COM

(865) 277-4700

524 PARKWAY

BETWEEN TRAFFIC LIGHTS #3 & #5



Play Big. Win Big.

- ♦ 25,000 sq. ft. of family entertainment
- ♦ Games for kids, teens, and grown-ups too
- ♦ Win points for exciting prizes
- ♦ Great for rainy days & breaks from the sun
- ♦ Roll into fun with Duck Pin Bowling



GATLINBURGARCADE.COM

(865) 436-5650

115 HISTORIC NATURE TRAIL
AT TRAFFIC LIGHT #8

6



*Hidden Horrors
Revealed!*

Gatlinburg's
**MYSTERIOUS
MANSION**
IF YOU DARE!

Gatlinburg's Most Terrifying Mansion

- Self-guided tour through a three-story Victorian mansion
- Navigate secret passageways and eerie dark corridors
- Experience spine-chilling chambers with lurking residents
- Celebrating 45 years of scaring Smoky Mountain visitors
- Open year-round with seasonal Halloween and Christmas events
- Interactive effects make every visit unique and full of surprises!



7

GATLINBURGMYSTERIOUSMANSION.COM
(865) 436-7007
424 RIVER ROAD



RIPLEY'S *Believe It or Not!*[®]

Discover a World of Unbelievable Fun!

- Journey through 16 unique and elaborately themed galleries!
- Marvel at the most astonishing collection of artifacts ever displayed with over 500 exhibits!
- Discover ancient relics, eccentric art, bizarre creatures, and extraordinary people!
- Where truth is stranger than fiction!
- Spark your curiosity and make memories that will last a lifetime!



RIPLEYSGATLINBURG.COM

(865) 436-5096

ON THE PARKWAY

JUST BEFORE TRAFFIC LIGHT #8

8



GATLINBURG Craftsmen's Fair

Best Shopping in Gatlinburg!

- Shop among 200+ artisan booths with unique handmade treasures!
- Explore live craft demonstrations!
- Enjoy live music at 12 & 3pm daily included!
- Low admission fee — \$10 from July 10–19, and \$12 from October 8–28 for adults, includes multi-day pass.
- Kids 17 and under enter for free with paid adult.
- Furry friends welcome in stroller or carrier, all indoors.



9

CRAFTSMENFAIR.COM

(865) 436-7479

234 AIRPORT ROAD

GATLINBURG CONVENTION CENTER



Gatlin's

SMOKY MOUNTAIN FUN

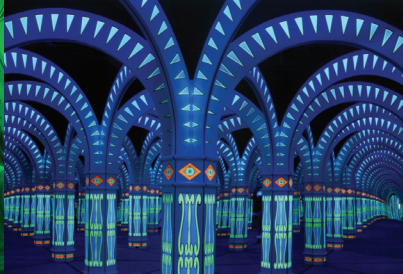
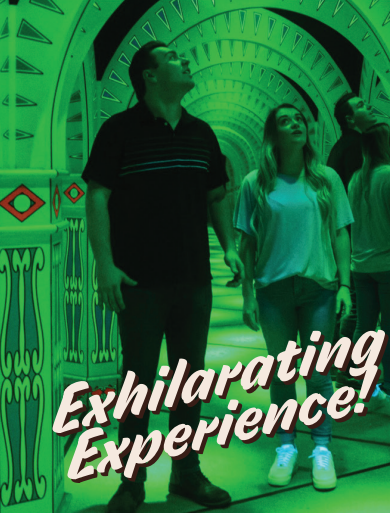
All-in-One Family Fun Center

- ◆ 8 attractions, 1 location
- ◆ Laser Tag & Gel Blasters in a 3,000 sq. ft. arena
- ◆ High-tech Bumper Cars
- ◆ 3-story Rugged Ropes Course
- ◆ Mini Golf, Escape Rooms & more
- ◆ Save with Bundles and Group Pricing



GATLINSFUNCENTER.COM
(865) 412-4248
716 PARKWAY
AT REAGAN TERRACE MALL

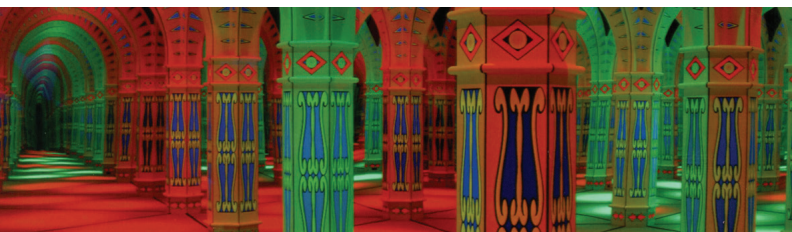
10



AMAZING MIRROR MAZE

Gatlinburg's Original Mirror Maze!

- Explore a sprawling maze featuring mind-bending mirrored corridors, dynamic lighting, and immersive sound effects.
- Year-round hours — open 9am to 10:30pm regularly, extended until midnight in summer.
- Fun experience — at your pleasure, take all the time you desire navigating the mirrored corridors of the maze; great for both kids and adults.
- Combo deals available — pair the Mirror Maze with Circus Golf for even more value and fun.



11

MIRRORMAZEGATLINBURG.COM

(865) 436-4415

919 PARKWAY

AT TRAFFIC LIGHT #8



RIPLY'S[®] ARCADE

Hi-tech Family Entertainment!

- ◆ Quality, family-oriented amusement in the heart of the Great Smoky Mountains!
- ◆ Some of the most popular, hottest, state-of-the-art video games!
- ◆ Wide selection of prizes!
- ◆ On the Parkway next to Ripley's Believe It or Not!



RIPLEYSGATLINBURG.COM

(865) 436-5096

ON THE PARKWAY

JUST BEFORE TRAFFIC LIGHT #8

12



THE GREAT SMOKY MOUNTAINS NATIONAL PARK

The Cherokee people called this the “Place of Blue Smoke,” inspired by the soft, bluish mist that rises from the mountain tops. Today, it stands as the most visited national park in the United States, a vast and breathtaking landscape where scientists are still discovering new plant and animal species.

Home to more than 1,500 black bears, the park offers unforgettable encounters with nature. Keep your eyes open as you hike — spotting a bear in its natural habitat is an experience you’ll never forget. And beyond the wildlife, there’s no shortage of beauty to behold — waterfalls, winding valleys, historic cabins, and scenic overlooks around every turn.

Take a drive and feel your heart come alive. Early explorers once braved weeks of bushwhacking to glimpse these mountain vistas. Thankfully, today’s visitors can experience the Smokies’ most spectacular sights with ease, thanks to miles of paved roads and scenic byways that wind through the park.





For those seeking a closer connection to nature, lace up your boots and hit the trails. The Smoky Mountains' hiking paths lead through old-growth forests, past waterfalls, and along ridgelines that reveal unforgettable views. There's nothing quite like the sound of rushing water, the rustle of leaves, and the promise of a majestic vista waiting at trail's end.

History comes alive here too. Step back in time at Appalachian homesteads, mills, and one-room schoolhouses, where the stories of early mountain life are still told through the preserved architecture and landscapes.

When it's time to rest, Gatlinburg offers some of the region's most scenic picnic spots. Enjoy a meal among history at Cades Cove, relax beside the Little Pigeon River at the Chimneys picnic area, or explore one of several other peaceful locations nearby.

Please note: As of March 1, 2023, a valid parking tag is required for any vehicle parked longer than 15 minutes inside the Great Smoky Mountains National Park. Revenue from the program directly supports trail maintenance, road improvements, and visitor facilities. Parking tags are available at the Sugarlands Visitors Center within the park and at the Gatlinburg Welcome Center, 1011 Banner Road.

Tags cost \$5 daily, \$15 weekly, or \$40 annually. Visitors simply driving through the park do not need a tag.



FOR MORE INFORMATION, VISIT [NPS.GOV/GRSM](https://www.nps.gov/grsm)



YOUR ADVENTURE AWAITS!

- 1 GATLIN'S ESCAPE GAMES
- 2 SMOKY MOUNTAIN OUTDOORS RAFTING
- 3 RIPLEY'S AQUARIUM OF THE SMOKIES
- 4 GATLIN'S MINI GOLF
- 5 RIPLEY'S SUPER FUN ZONE!
- 6 ARCADIA
- 7 MYSTERIOUS MANSION
- 8 RIPLEY'S BELIEVE IT OR NOT!
- 9 GATLINBURG CRAFTSMEN'S FAIR
- 10 GATLIN'S LASER TAG
- 11 AMAZING MIRROR MAZE
- 12 RIPLEY'S ARCADE
- 13 GATLINBURG SKYPARK
- 14 RIPLEY'S DAVY CROCKETT MINI GOLF
- 15 RIPLEY'S MOTION BLASTER
- 16 RIPLEY'S HAUNTED ADVENTURE
- 17 HILLBILLY GOLF
- 18 GATLINBURG SPACE NEEDLE
- 19 ANAKEESTA
- 20 RIPLEY'S MOUNTAIN COASTER
- 21 FANNIE FARKLE'S
- 22 RIPLEY'S PENGUIN PLAYHOUSE
- 23 NOC GATLINBURG
- 24 CIRCUS GOLF
- 25 RIPLEY'S MIRROR MAZE
- 26 HOLLYWOOD STAR CARS
- 27 OBER MOUNTAIN

-  TRAFFIC LIGHTS
-  MEDICAL FACILITY
-  PUBLIC RESTROOMS



PARKING



TROLLEYS

Trolleys only stop at designated signs and shelters. For schedule, visit: GatlinburgTrolley.org

Great Smoky Mts



↑ TO COSBY AND I-40

321

CKHORN RD

GATLINBURG COMMUNITY CENTER

ROCKYTOP SPORTS WORLD

ONEWAY

ROARING FORK RD (MOTOR NATURE TRAIL)

KINS CREEK BYPASS

NEWTON LN

CHEROKEE ORCHARD RD

19

441

THE VILLAGE



4 10

21 1

S SIT ER

25 6

PARKWAY

1

LITTLE PIGEON RIVER

7

13 8

MAPLE LN

8+12 6

18 9

15 16

26

23

GATLINBURG CONVENTION CENTER

11 24

24

8 10

15 16

26

441

→ TO CHEROKEE, NC

GATLINBURG BYPASS

LONG BRANCH RD

SKI MOUNTAIN RD

SUGARLANDS VISITOR CENTER

73

↓ TO CADES COVE AND TOWNSEND





Winter Magic in Gatlinburg

Wintertime visitors to Gatlinburg are in for a flurry of festive fun during the holiday season. The city comes alive with sparkling lights, joyful events, and over 50 whimsical snowpeople scattered throughout downtown, each adding a touch of cheer to the streets. The Winter Magic Celebration, running from November through mid-February, transforms Gatlinburg into a true winter wonderland. Recently enhanced with upgraded, animated holiday displays and more than one million twinkling LED lights, the city glows with warmth and wonder. Visitors can take a self-guided tour to experience all the dazzling Winter Magic light displays at their own pace.

The season's highlight arrives on the first Friday in December with the beloved Gatlinburg Fantasy of Lights Christmas Parade. This cherished tradition lights up the Parkway with illuminated floats, giant balloons, marching bands, and holiday performers, a spectacle that has earned its place as the South's oldest nighttime Christmas parade.

Celebrate the magic, the lights, and the spirit of the season in Gatlinburg — where winter truly shines.

Made in Gatlinburg

The Gatlinburg Welcome Center, located on Highway 441 just north of town, is home to a unique store featuring items that are Made in Gatlinburg. Representing products from the Great Smoky Arts & Crafts Community, you can select a perfect Gatlinburg souvenir to take home, or use the store as an introduction to our Arts & Crafts Community located just minutes from downtown. Open daily except Christmas Day.

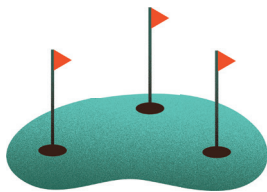




Gatlinburg Golf Course

Teeing off is a little different in the mountains. The natural landscape in Gatlinburg makes for quite a few uniquely designed holes. Grab your clubs and test your skills on the beautiful Gatlinburg Golf Course, situated in the foothills of the Great Smoky Mountains. The course features some of the most picturesque rolling hills in the area. The upgraded golf carts feature the Shark Experience.

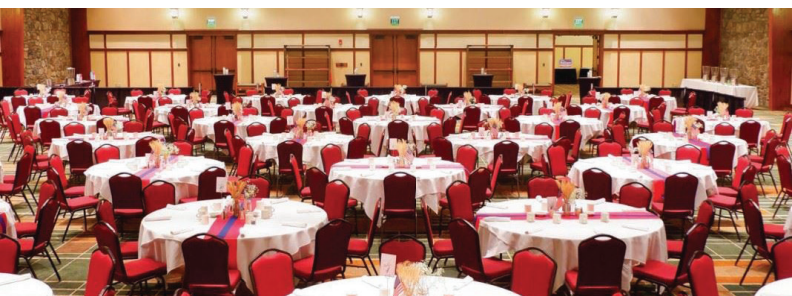
The 18-hole professional course is located 6 miles from downtown Gatlinburg on Dollywood Lane in Pigeon Forge. Call (865) 453-3912 for tee times or book online at GOLF.GATLINBURG.COM



Gatlinburg Convention Center

The Gatlinburg Convention Center is the ideal place to host meetings, conventions, and events. Newly renovated in 2021, the extensive upgrades to the Gatlinburg Convention Center included major cosmetic modernizations including redevelopment of the outdoor plaza, revamped ADA accessible ramps and stairs, landscaping, and more. The upgrades also included the conversion of previous storage areas to new, revolutionized meeting space.

Conveniently located in the heart of Gatlinburg, the Center is within walking distance of restaurants, attractions, shopping areas and lodging. Visit MEETINGS.GATLINBURG.COM for more information.





GATLINBURG

SKYPARK

The Best Views in Gatlinburg

- Cross the record-setting SkyBridge, the longest pedestrian cable bridge in North America.
- Check out amazing views from our newest addition: Clayton's Landing.
- Grab a mouthwatering Smash Burger at Smoky Mountain Smash restaurant.
- Hike our 1.5 miles of hiking trails.
- Visit SkyPark Shop to purchase logo wear as you exit the park.



13

GATLINBURGSKYPARK.COM

(865) 436-4307

765 PARKWAY

BETWEEN TRAFFIC LIGHTS #6 & #8



RIPLEY'S Davy Crockett MINI-GOLF

Fun On the Wild Frontier!

- Play Two Fun 18-Hole Miniature Golf Courses!
- Gather with family and friends and putt your skills to the test!
- Delightful Interactives, Hazards, and Animated Critters!
- Spinner Course Challenges for More Entertainment!
- Scenic Views and Free Parking!



RIPLEYSGATLINBURG.COM

(865) 430-8851

ON THE PARKWAY,
AT TRAFFIC LIGHT #1

14



RIPLEY'S[®] MOTION BLASTER

The Future of Fun!

- ◆ Hold on tight and experience 7-D Done Right!
- ◆ Full-throttle, Action-packed, Interactive Motion Simulator!
- ◆ Get the High Score! Compete against family, friends, and foes to prove you are the Ultimate Champion!
- ◆ Feel every twist, turn, bump, and drop in an immersive adventure!
- ◆ Epic surround sound and multi-dimensional effects!



15

RIPLEYSGATLINBURG.COM

(865) 436-9763

ON THE PARKWAY, AT LIGHT #8

NEXT TO RIPLEY'S HAUNTED ADVENTURE



RIPLEY'S HAUNTED ADVENTURE

Are You Ready to Face A Mountain of Fear?

- ♦ Discover what goes bump in the dark!
- ♦ Venture through the darkness as live actors, special effects, and unexpected surprises keep you on your toes!
- ♦ Full of suspense and surprises for the brave souls ready for a horrifying good time!
- ♦ Terrifying and Heart Pumping Adventure!
- ♦ Year-Round Screams! Feel the Fright Anytime!



RIPLEYSGATLINBURG.COM

(865) 436-7479

920 PARKWAY, AT TRAFFIC LIGHT #8

AT THE CONVENTION CENTER

16



Hillbilly GOLF

Mountain-Top Mini Golf Fun!

- ◆ The world's most unusual golf course!
- ◆ Family-owned and operated for over half a century
- ◆ Escape the summer heat in the cool mountain air
- ◆ Surround yourself with the culture of the Smoky Mountains
- ◆ Prohibition-era moonshine stills and other authentic treasures from the area



17

GATLINBURG-ATTRACTIONS.COM
(865) 436-7470
ON THE PARKWAY
NEAR TRAFFIC LIGHT #2



SPACE NEEDLE GATLINBURG

Epic Views from 407 Feet Up!

- Ride glass elevators to the top
- 360° views of downtown & Smoky Mountains
- Free viewfinders and “Higher Learning” exhibits
- Unforgettable photo ops in every season
- A must-see for nature lovers & sightseers

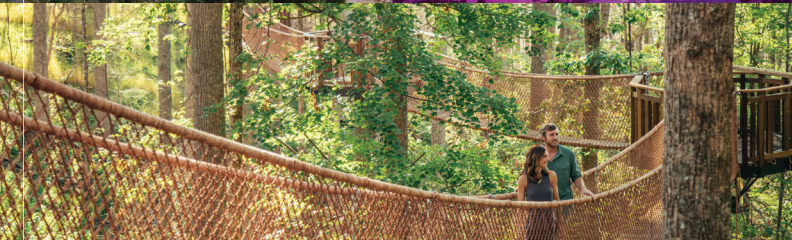


GATLINBURGSPACENEEDLE.COM

(865) 436-4629

115 HISTORIC NATURE TRAIL
AT TRAFFIC LIGHT #8

18



ANAKEESTA

there's *magic* in the mountains

A Mountain of Fun to Explore!

- Explore magical nighttime lights at Astra Lumina, scenic gardens, and stunning 360° mountain views.
- Walk 1,000 feet across rope bridges on the TreeTop Skywalk.
- Climb, slide, and play in adventure zones.
- Dine with a view at Clifftop and enjoy sweet treats at Mimi's Creamery.



19

ANAKEESTA.COM
(865) 325-2400
576 PARKWAY
AT TRAFFIC LIGHT #5



The Wildest Ride in Gatlinburg!

- Experience 2 Amazing Thrill Rides and Stunning Views!
- Embrace daring speed zooming through twists and turns!
- Reach speeds of up to 30 mph as you zip through the Great Smoky Mountains on your own gravity-propelled Coaster cart.
- Take flight on the suspended Mountain Glider, combining free falling and hang gliding!



RIPLEYSGATLINBURG.COM

(865) 430-7800

386 PARKWAY

NEAR TRAFFIC LIGHT #3

20



*Great Food,
Amazing Fun!*



Come for the Food and Stay for the Fun!

- The Smoky Mountains' favorite family vacation destination since 1981
- Mouthwatering sausage subs, cheesesteaks, and the world-famous Ogle Dog
- Huge arcade with all your favorite games (old-school and all the latest!)
- The area's largest selection of top-quality arcade prizes
- The best drinks in Gatlinburg — Bill's Lemonade and Frozen Farkle's Freezy



21

FANNIEFARKLES.COM

(865) 436-4057

656 PARKWAY

BETWEEN TRAFFIC LIGHTS #6 & #8



RIPLEY'S PENGUIN PLAYHOUSE

African Blackfooted Penguin Habitat!

- ♦ See playful penguins in their unique habitat!
- ♦ View penguins above and below the water!
- ♦ Crawl through underwater tunnels and pop up on the penguins' private beach to get up-close!
- ♦ Enjoy the Penguin Parade at 1:15pm daily!
- ♦ Reserve a Penguin Encounter and Penguin Painting Experience with one of the penguins!



RIPLEYSAQUARIUMOFTHESMOKIES.COM

(865) 430-8808

ON THE PARKWAY, LIGHT #5

AT RIPLEY'S AQUARIUM OF THE SMOKIES

22



NANTAHALA OUTDOOR CENTER

Gatlinburg Store

The Smokies Favorite Adventure Outfitter!

- Professional guides for Pigeon River Rafting and GSMNP hikes
- 18,000 sq. ft Outdoor Store at the entrance of the National Park
- 3 Floors of Gear, Gifts, Local Goods, Apparel, Footwear, & More
- Staff gear gurus and park experts, ready to answer your questions
- Top Brands like L.L. Bean, Patagonia, & The North Face
- In-store Climbing Wall, Kids Bear Cave & Swinging Rope Bridge
- Family Friendly Whitewater Rafting Trips on Area Rivers



23

NOC.COM

(865) 245-0712

1138 PARKWAY

AT TRAFFIC LIGHT #10



In Blacklight!

CIRCUS GOLF™

18-Hole Indoor Adventure!

- A unique blend of mini-golf and circus funhouse, all under blacklight for a glowing experience
- Interactive Features: Enjoy animatronic characters, computer animations, and special sound effects throughout the course
- Family-Friendly Fun: Perfect for all ages, making it an ideal stop for families visiting Gatlinburg
- Affordable Pricing: With combo deals available for additional attractions



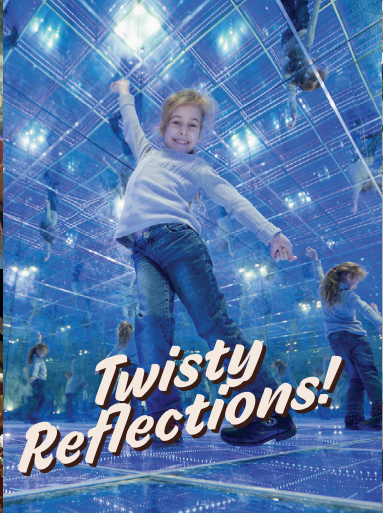
MIRRORMAZEGATLINBURG.COM

(865) 436-4415

919 PARKWAY

AT TRAFFIC LIGHT #8

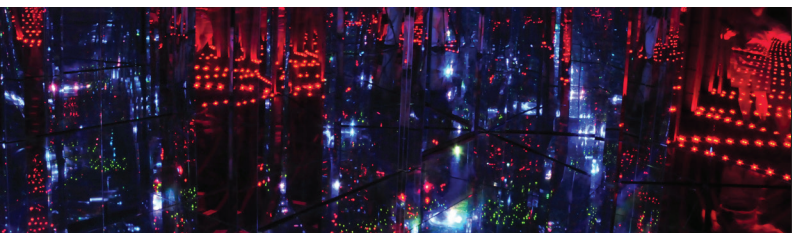
24



RIPLEY'S[®] MIRROR MAZE

Never Ending Adventure!

- Find your way out or lose yourself in a reflective world of LED lights and never-ending mirrors!
- Navigate winding hallways and mirrored rooms!
- Challenge your sense of perception, direction, and fun around every twist and turn!
- Make A-maze-ing Memories with Family and Friends!



25

RIPLEYSGATLINBURG.COM
(865) 430-1834
ON THE PARKWAY
AT TRAFFIC LIGHT #6



Where the Cars are the Stars!

- ♦ See over 50 of your favorite authentic Hollywood vehicles
- ♦ Step into iconic scenes you'll instantly recognize
- ♦ Marvel at legendary creations by car designer George Barris including the original 1966 Batmobile
- ♦ Panoramic Full-Motion Simulators featuring the Hollywood Star Cars Collection
- ♦ Relive your favorite blockbuster hits like *Batman Returns*, *Gone in 60 Seconds*, and *The Fast and the Furious*!



**Up-Close
Collection!**

STARCARSTN.COM

(865) 430-2200

914 PARKWAY, NEAR LIGHT #8

NEXT TO THE CONVENTION CENTER

26



Gatlinburg's True Mountain Adventure!

- Tennessee's only Ski & Snowboard Area
- Winter Snow Tubing
- Smoky Mountain Wildlife Habitat
- Lift-Served Downhill Mountain Biking Park
- The Cloud Catcher, the Highest Zipline in the Smoky Mountains
- Tennessee Flyer Mountain Coaster
- Year-Round Indoor Ice Skating & Ice Bumper Cars



27

OBERMOUNTAIN.COM
(800) MUCH-FUN
1339 SKI MTN. ROAD
AT TRAFFIC LIGHT #10



Gatlinburg Trolley System

Hop aboard the Trolley — a fun, easy, and free way to get around Gatlinburg. Four color-coded trolleys make frequent stops along four regular routes around Gatlinburg 365 days a year. Visitors in the area can board a Trolley at any stop in the City and be off to their destination. The Gatlinburg Trolleys operate without charging riders a fare.

All Trolleys stop at the Mass Transit Center, located at Ripley's Aquarium of the Smokies. The Map in the center of this guide shows the Gatlinburg routes.

The Gatlinburg Trolley can also be used as an easy way to get into downtown without the hassle of driving into the City and finding a parking spot. You can use the free Park-and-Ride Lot at the Gatlinburg Welcome Center, located at 1011 Banner Road in Gatlinburg, just off of the Spur, or at the Park-and-Ride Lot at City Hall at 1230 East Parkway just before entering town. These lots allow you to park, board a trolley, and be in downtown Gatlinburg in a matter of minutes.

Operating hours can change seasonally, so be sure to check [GATLINBURG.COM/TROLLEY](https://www.gatlinburg.com/trolley) for updates.





SEEING BLACK BEARS

In the Great Smoky Mountains

Black Bears are an iconic symbol of Great Smoky Mountains National Park and a treasure to our community. While seeing a bear is a wonderful experience, it's important to always be BearWise. Please review the following tips and information so you know what to do if you encounter a bear in town or on the trail.



Black Bear Safety Tips

Bears are wild and their behavior can be unpredictable. Although extremely rare, attacks on humans have occurred, inflicting serious injuries and death. *Treat bear encounters with extreme caution!*

- ♦ Do not approach within 50 yards or any distance that disturbs a bear. Use binoculars or a telephoto lens to view animals.
- ♦ Do not allow a bear to approach you.
- ♦ If you see a bear, slowly back away from the bear.
Do NOT turn and run.
- ♦ Make sure the bear is aware of your presence by yelling and making noises to frighten the bear and encourage it to leave.
- ♦ Groups should stay together, especially children.
- ♦ Keep dogs leashed at all times. Don't let your dog harass a bear.
- ♦ Put all trash and food scraps in bear-resistant containers or take it with you. Be sure to close and latch tightly.
- ♦ Do not feed or place food to attract bears.
- ♦ Do not leave grills or picnic tables unattended.
- ♦ Do not leave food in your car or in coolers outside the cabin.
- ♦ If you must store food in vehicles, keep it out of sight.
Completely close and LOCK all doors and windows of vehicles and buildings. (Yes, bears can open them.)
- ♦ Do not feed wildlife. Feeding a bear guarantees its demise!

**IF YOU SEE ANOTHER VISITOR BREAKING THE ABOVE
RULES, OR YOU ENCOUNTER A BEAR, PLEASE CALL
(865) 436-1230 TO REPORT. HELP KEEP BEARS WILD!
VISIT BEARWISE.ORG FOR MORE INFORMATION.**

SPECIAL EVENTS

Sweet Week

FEBRUARY 7–14

Treat yourself to a Valentine's celebration filled with specialty desserts, confections, and sweet deals from Gatlinburg's favorite shops and eateries.



Pancake Week

FEBRUARY 21–28

Experience Gatlinburg's famous breakfast culture with a week-long spotlight on delicious pancake creations at local restaurants.



Gatlinburg Wine Fest

MARCH 14

Sip and savor Tennessee's finest wines while enjoying live music, food pairings, and the charm of the Smoky Mountains.

Easter Sunrise Service at Ober Mountain

APRIL 5

Welcome Easter morning with an inspiring, non-denominational service set against the breathtaking backdrop of the rising sun over the mountains.

Mountain Man Memorial March

APRIL 16

Honor America's fallen heroes with this challenging march and moving tribute, bringing together service members, veterans, and the community.

Spring Wildflower Pilgrimage

APRIL 23–25

Join naturalists and guides for an immersive exploration of the Smokies' vibrant flora, featuring guided hikes, educational programs, and photography walks.

Gatlinburg Farmers Market

MAY–OCT, SATURDAYS

Stroll through a lively market offering fresh produce, homemade baked goods, local crafts, and seasonal treats every Saturday.

Smoky Mountain Tunes & Tales

JULY 1–31

Enjoy nightly street performances showcasing Appalachian music, storytelling, clogging, and traditional mountain culture in downtown Gatlinburg.

Annual Fourth of July Midnight Parade

JULY 3

Kick off Independence Day in true Gatlinburg style with America's first parade of the holiday, stepping off at the stroke of midnight.



River Raft Regatta, Fourth of July Drone and Fireworks Show

JULY 4

Celebrate the holiday with a fun-filled unmanned float race down the river, followed by a spectacular drone and fireworks display lighting up the night sky.



Gatlinburg Craftsmen's Fair

JULY 10–19

Discover handcrafted works from talented artisans across the country, complemented by live bluegrass music and traditional demonstrations.

GatlinBURGER Week

SEPTEMBER 11–18

Sink your teeth into creative, mouthwatering burger masterpieces as Gatlinburg restaurants put their own spin on this beloved classic — then take on the challenge of tasting and voting for your favorites all week long.



Gatlinburg Craftsmen's Fair

OCTOBER 8–25

Celebrate the fall season with artisan crafts, seasonal décor, and live entertainment in a festive Smoky Mountain atmosphere.

Veterans Day

NOVEMBER 11

Pay tribute to the courage and sacrifice of our nation's veterans during Gatlinburg's heartfelt Veterans Day ceremonies.

Gatlinburg Winter Magic Kickoff & Chili Cookoff

NOVEMBER 12

Ring in the holiday season with the lighting of Gatlinburg's Winter Magic displays while sampling dozens of flavorful chili recipes.



Fantasy of Lights Christmas Parade

DECEMBER 4

Brighten your holiday season with this dazzling parade featuring twinkling floats, marching bands, giant balloons, and festive performances.

New Year's Eve Celebration, Drone Show and Ball Drop

DECEMBER 31

Count down to midnight in downtown Gatlinburg with live music, a high-tech drone show, fireworks, and the city's famous ball drop.



Year-round, Gatlinburg comes alive with unforgettable celebrations, traditions, and experiences that highlight the beauty of the Smoky Mountains and the heart of our community. From food festivals and cultural showcases to seasonal parades and holiday traditions, there's something exciting happening in every season.

***Special Note:** As this calendar is produced up to a year in advance, dates and locations are subject to change. For full details on any Gatlinburg event, please call 865-568-4748 or visit our Special Events page at [GATLINBURG.COM/EVENTS](https://www.gatlinburg.com/events)



GATLINBURG CARES

Keeping the City Clean and Green

“Here’s a well-kept secret about the region you might not know: It’s home to what many consider to be one of the most innovative and effective solid waste processing plants in the world, Sevier Solid Waste Inc. Not country - but world.”

—Linda Bryant, Knoxville News Sentinel

From breathtaking landscapes and mountain views to rivers and waterfalls, the environment and diversity of wildlife are a foundational part of the visitor experience in the Smokies. As stewards of the majestic Great Smoky Mountains National Park, residents and businesses of Gatlinburg are committed to preserving the natural beauty and wildlife for future generations to enjoy.

Visitors often ask why there are no recycling bins in Sevier County. Sevier Solid Waste Inc. has created a world-class recycling and composting facility that renders recycling bins obsolete. The plant successfully handles garbage generated by millions of visitors each year by separating organic waste from recyclable materials.

Food, paper and cardboard are placed in aerobic digesters and eventually become compost. Non-organic materials, like metals and plastics, are separated, cleaned and prepared for recycling.

For more information on the green innovations in Gatlinburg, visit [GATLINBURG.COM/PLAN/ABOUT-GATLINBURG/GATLINBURG-GOES-GREEN/](https://www.gatlinburg.com/plan/about-gatlinburg/gatlinburg-goes-green/)



PARKING IN GATLINBURG

Our Guide to a Stress-Free Experience

Gatlinburg offers several public parking garages and lots that put you right in the heart of the action. Two major municipal garages are:

MCPHAN PARKING GARAGE

at 520 Parkway, with about 366 spaces

AQUARIUM PARKING GARAGE

at 161 Greystone Heights, with around 364 spaces

Daily rates for these are generally around \$10 per vehicle, though the price can vary during peak seasons or special events.



To avoid downtown congestion and parking stress, Gatlinburg provides free park-and-ride lots located just outside the main strip. Examples include the lot at the Gatlinburg Welcome Center on Highway 441 (about 145 spaces) and the lot at the City Hall complex on Highway 321 (about 95 spaces). From these lots, you can take the free or low-cost downtown trolley to reach attractions without needing to find a downtown parking spot.

Tips for Smoother Parking

- ♦ Arrive early, especially during busy times such as summer, fall foliage, or the holiday season, as spaces fill up quickly.
- ♦ If you're staying overnight at a hotel or cabin, check whether your lodging includes parking or has reserved spots.
- ♦ For short visits, look for less-used lots farther from the main Parkway strip and walk in to avoid the busiest areas.
- ♦ Use the park-and-ride plus trolley option if you'd rather skip downtown traffic altogether; it's budget-friendly and convenient.

Important Restrictions

Overnight parking and long-term unattended vehicles are not permitted in many downtown lots. Be sure to check lot signage and rules before you park.

WITH A LITTLE PLANNING, PARKING IN GATLINBURG CAN BE STRESS-FREE, LEAVING YOU MORE TIME TO ENJOY THE SHOPS, RESTAURANTS, MOUNTAIN VIEWS, AND ATTRACTIONS.

OFFICIAL 2026-2027 GUIDE

GATLINBURG

ATTRACTIONS ASSOCIATION

VISIT GATLINBURG APP

Want all things Gatlinburg in the palm of your hand? Download the Visit Gatlinburg app! It's our FREE, all-in-one tool to help you plan and enjoy your trip. Whether you're digging into attractions and upcoming events before you arrive or searching for an in-the-moment adventure during your stay, our app offers timely information on everything worth stumbling upon in the Smokies.



DOWNLOAD NOW



GATLINBURG-ATTRACTIONS.COM